

Wonderful Merciful Savior

Words and Music by
Dawn Rodgers and Eric Wyse

Outline:
Int, V1, V2, Ch, V3, Ch(2x)

♩ = 110

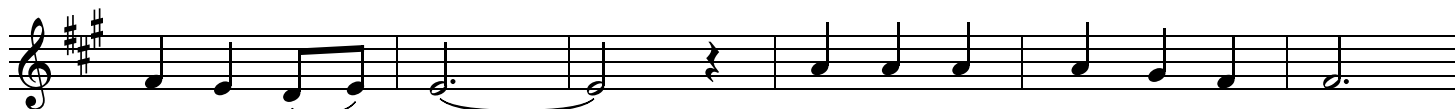
VERSE

A D/A A Bm/A A A/C#



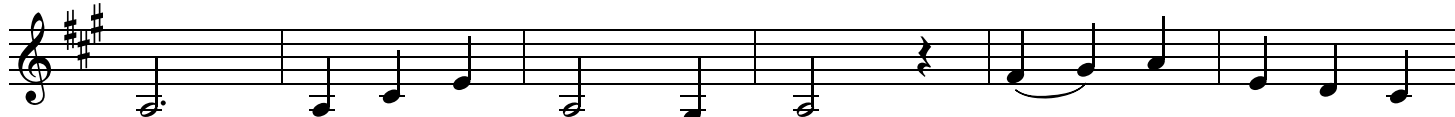
1. Won - der - ful, mer - ci - ful Sav - ior, pre - cious Re -
2. Coun - se - lor, Com - fort - er, Keep - er, Spir - it we
3. Al - might - y, in - fi - nite Fa - ther, faith - ful - ly

6 D A/C# Bm E^{sus} E C#/E# F#m F#m/E D



-deem - er and ___ Friend; ___ Who would have thought that a Lamb
long to em - brace; ___ You of - fer hope when our hearts
lov - ing Your ___ own; ___ Here in our weak - ness You find

12 A/E E^{7sus} C#/E# F#m D D/F# A/E



could res - cue the souls of men? Oh, ___ You res - cue the
have hope - less - ly lost the way. Oh, ___ we hope - less - ly
us fall - ing be - fore Your throne. Oh, ___ we're fall - ing be -

CHORUS

18 Dmaj⁷/E E⁷ D/A E/A A E/G# F#m F#m/E D



souls of men. ___ You are the One that we praise, ___
lost the way. ___
-fore Your throne. ___

24 E C#/E# F#m F#m/E D E C#/E# F#m



___ You are the One we a - dore. ___ You give the

30 A/E D A/E E^{7sus} C[#]/E[#] F^{#m}

heal - ing and grace our hearts al - ways hun - ger for,

Detailed description: This block contains the first musical staff, measures 30 through 35. The key signature is one sharp (F#) and the time signature is 4/4. The melody consists of quarter and eighth notes. Chord symbols are placed above the staff: A/E, D, A/E, E^{7sus} C[#]/E[#], and F^{#m}. The lyrics are: "heal - ing and grace our hearts al - ways hun - ger for,".

36 D D/F[#] A/E

1, 2. Dmaj⁷/E E⁷ **TURNAROUND** A A^{2sus} A D/A

oh, ___ our hearts al - ways hun - ger for. _____

Detailed description: This block contains the second musical staff, measures 36 through 40. It features a first ending bracket over measures 36-39. The key signature remains one sharp. Chord symbols are: D, D/F[#], A/E, Dmaj⁷/E, E⁷, A, A^{2sus}, A, D/A. The lyrics are: "oh, ___ our hearts al - ways hun - ger for. _____".

41 Amaj⁷ D/A A A^{2sus}

3. Dmaj⁷/E E⁷ **OUTRO** A A^{2sus} A D/A E/A A²

hun - ger for. _____

Detailed description: This block contains the third musical staff, measures 41 through 45. It features a second ending bracket over measures 41-44. The key signature remains one sharp. Chord symbols are: Amaj⁷, D/A, A, A^{2sus}, Dmaj⁷/E, E⁷, A, A^{2sus}, A, D/A, E/A, A². The lyrics are: "hun - ger for. _____".